

PARK INNOVAARE: Where Innovation Accelerates

Assets of the site

PARK INNOVAARE is the innovation site at the Paul Scherrer Institute PSI, in operation since 2015. In cooperation with the largest natural science and engineering research center of Switzerland and the University of Applied Sciences of Northwest Switzerland (FHNW), and supported by a strong economic base of shareholders including large companies and small-/medium-sized enterprises, the globally competitive innovation center is planned to take shape at the Villigen/Würenlingen site. Collaborations between business and science, joint ventures with cantonal and international participants, and also promising spin-offs will secure Switzerland's capacity for innovation and spark productive impulses for growth.



Breakthrough Innovation – unique worldwide
PARK INNOVAARE at the Paul Scherrer Institute PSI provides access to a complex of large research facilities that is globally unique.

Rapidly growing innovation ecosystem

The focus is on innovations in the areas of Accelerator Technology, Advanced Materials & Processes, Humans & Health and Energy.

Developed campus

PSI, with its more than 2000 employees, is experiencing the construction of new, highly functional buildings (financed privately). Area available for lease: 22,000 square meters including workshops, labs and clean rooms as well as office, conference and co-working space. Available starting in Q1/2020.



Integrated in the national innovation network
PARK INNOVAARE is one of five site sponsors of the national innovation park Switzerland Innovation and is thus an integral part of its international marketing organization and support system (Federal guarantee).

Milestones of the development and current projects

Constructing, moving in and operating its first own building

PARK INNOVAARE has been a visible presence since September 2015. The deliveryLAB comprises an area of 400 square meters, hosting the first technology companies. The nucleus of the future innovation park is attracting more and more experts and delegations from within Switzerland and abroad.

Important successes in attracting resident companies, particularly in the field of biotechnology

Outstanding environmental conditions for technology- and research-oriented companies as well as a focused support program are in place. To date, eight companies have taken up residence; additional candidates will soon follow.

Demand-oriented expansion of the lab offering

Due to demand, 200 square meters of new biolab capacities have been made ready for construction. The interim solution will secure the required capacity until the final building can be moved into in 2020.

Opening of a co-working area

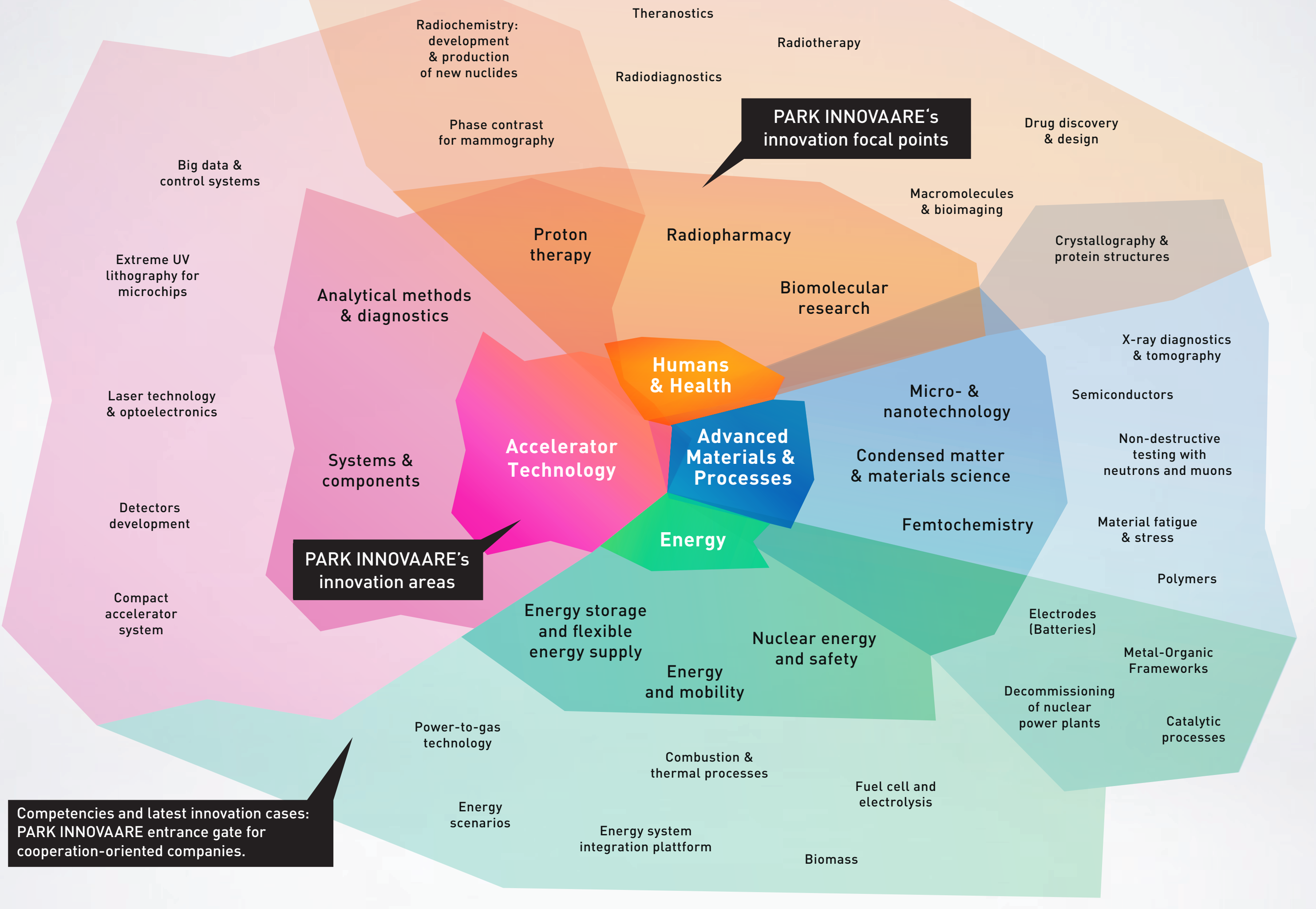
For postdoc students eager to start a company, young spin-offs or external users who want to work in the inspiring environment of a globally leading research institute, a co-working area is currently being developed.

Ongoing expansion of the innovation platform

An event calendar (www.parkinnovaare.ch/events) provides information about attractive new formats such as INNOVATION in PRACTICE, DISRUPTIVE MORNING and others. The events regularly bring together numerous specialists and managers from research and industry.



The innovation portfolio



Today at PARK INNOVAARE



Advanced Accelerator Technologies AG (www.aa-t.ch) is a systems provider for particle accelerators, serving a growing global market for systems designed for scientific and industrial use. Founded in April 2015, at PARK INNOVAARE since September 2015.



leadXpro AG (www.leadxpro.com) specializes in membrane proteins. Its objective is to develop and optimize medical substances. Founded in Dec. 2015, at PARK INNOVAARE since December 2015.



nomoko AG (www.nomoko.camera) is developing a new technology for extremely high resolution cameras (up to 2 gigapixels) for versatile virtual reality applications. Founded in June 2015, at PARK INNOVAARE since December 2015.



Excelsus Structural Solutions AG (www.excelssuss.com) offers analytical services with the aim of improving the selection, development and production of high-quality (bio-)pharmaceutical products. Founded in February 2014, at PARK INNOVAARE since April 2016.



InterAx Biotech AG (www.interaxbiotech.com) supports the discovery of new functional-selective medicines by setting up a technology platform based on biosensors. Founded in April 2016, at PARK INNOVAARE since April 2016.



Swiss Hydrogen SA (www.swisshydrogen.ch) develops clean energy solutions based on hydrogen for a variety of applications allowing for zero-emission electricity production. Founded in 2008, at PARK INNOVAARE since January 2017.

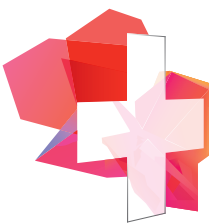


novoMOF AG has developed an innovative technology for more efficiently producing various metal-organic frameworks (MOFs), a quickly growing class of materials for chemistry applications. Founded in February 2017, at PARK INNOVAARE since February 2017.



Crystallise! AG (www.crystallise.ch) is a highly-specialized company that provides crystallographic services for identifying small molecule compounds and addresses the chemical, pharmaceutical and agro-industries. Founded in September 2014, to be at PARK INNOVAARE starting in April 2017.

PARK INNOVAARE partners



SWITZERLAND INNOVATION PARK INNOVAARE

Where Innovation Accelerates

Switzerland Innovation Park innovaare
innovAARE AG, 5234 Villigen
+41 56 461 70 70
info@parkinnovaare.ch

#WhereInnovationAccelerates

What role does innovation play for economics and well-being in Switzerland and the canton of Aargau?



Dr. Remo Lütolf
Managing Director of ABB Switzerland AG
ABB, founded in the canton of Aargau, operates internationally and is a world leader in power and automation technology.

Does Switzerland have a chance of holding its own in the international race for innovation?

In terms of innovation power, Switzerland is among the world's leaders. To maintain that position, it will have to continue investing in education, research and innovation: these are absolutely essential for a competitive business location.

Are innovation parks an up-to-date instrument for promoting innovation?

Without a doubt, since innovation parks promote the eminently important networking of universities, research institutions and technology-oriented companies, whether small- or medium-sized enterprises or corporate groups such as ABB. Physical proximity is

a significant aspect of an active idea network and for the transfer from science to industry.

What can companies expect from PARK INNOVAARE? And what shouldn't they expect?

PARK INNOVAARE, with its outstanding infrastructure and direct proximity to the prestigious Paul Scherrer Institute, enables collaboration between science and research – allowing Swiss companies to offer their customers innovative, cutting-edge technology, and to continue to do so in the future. This can also benefit start-ups and established companies, and it is also being systematically supported by the Hightech Zentrum Aargau.

Is PARK INNOVAARE a stroke of luck for the canton of Aargau and the local economy?

Absolutely. Due to PARK INNOVAARE, the canton of Aargau holds an important position among the promoters of innovation. With its physical proximity to Paul Scherrer Institute PSI, the Federal Institute of Technology (ETH) and the University of Basel as well as to leading industrial companies, the conditions for an innovation park are ideal.



Dr. Christian Brönnimann
CEO, DECTRIS AG
DECTRIS was founded as a spin-off of PSI; today the company is the world's technology leader in the field of X-ray detection.

Is Switzerland at risk of losing the international innovation race?

No! When I see the kinds of complex projects we implement, always keeping to the limits of what is feasible, I don't worry at all. The Gotthard Base Tunnel, for example: that is a tour de force! Or the most recent example: in record time, within three years, we will have built the "Swiss-FEL": an incredibly complex machine with extreme requirements. These are outstanding achievements. The only important thing for us will be to have more such projects.

Are innovation parks an up-to-date instrument for promoting innovation?

An innovation park is absolutely up-to-date – there are many examples, Silicon Valley being one of the first and largest. The proximity to PSI

means that companies have the opportunity to exchange ideas with specialists at top level, with access to new technologies. If you're able to achieve a critical mass and size with an innovation park, that's really helpful.

What can companies expect from PARK INNOVAARE? And what shouldn't they expect?

PARK INNOVAARE provides an outstanding network and will be supplying fantastic framework conditions to high-tech companies in the different fields. And it will be facilitating access to expertise and investors. The success of a start-up is then in the hands of the people leading it.

Is PARK INNOVAARE a stroke of luck for the canton of Aargau and the local economy?

It's not a stroke of luck in the sense that it needed chance to come into being. It is the result of hard, good work. The canton of Aargau and PSI have been pouring effort into good conditions and basic research in the region for decades. PARK INNOVAARE is now creating a location where the implementation and commercial use of this expertise can take place more simply and more quickly.